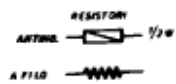
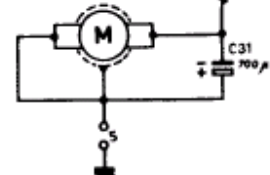
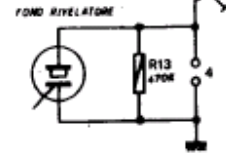
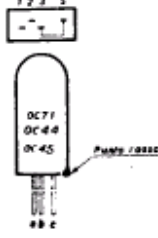
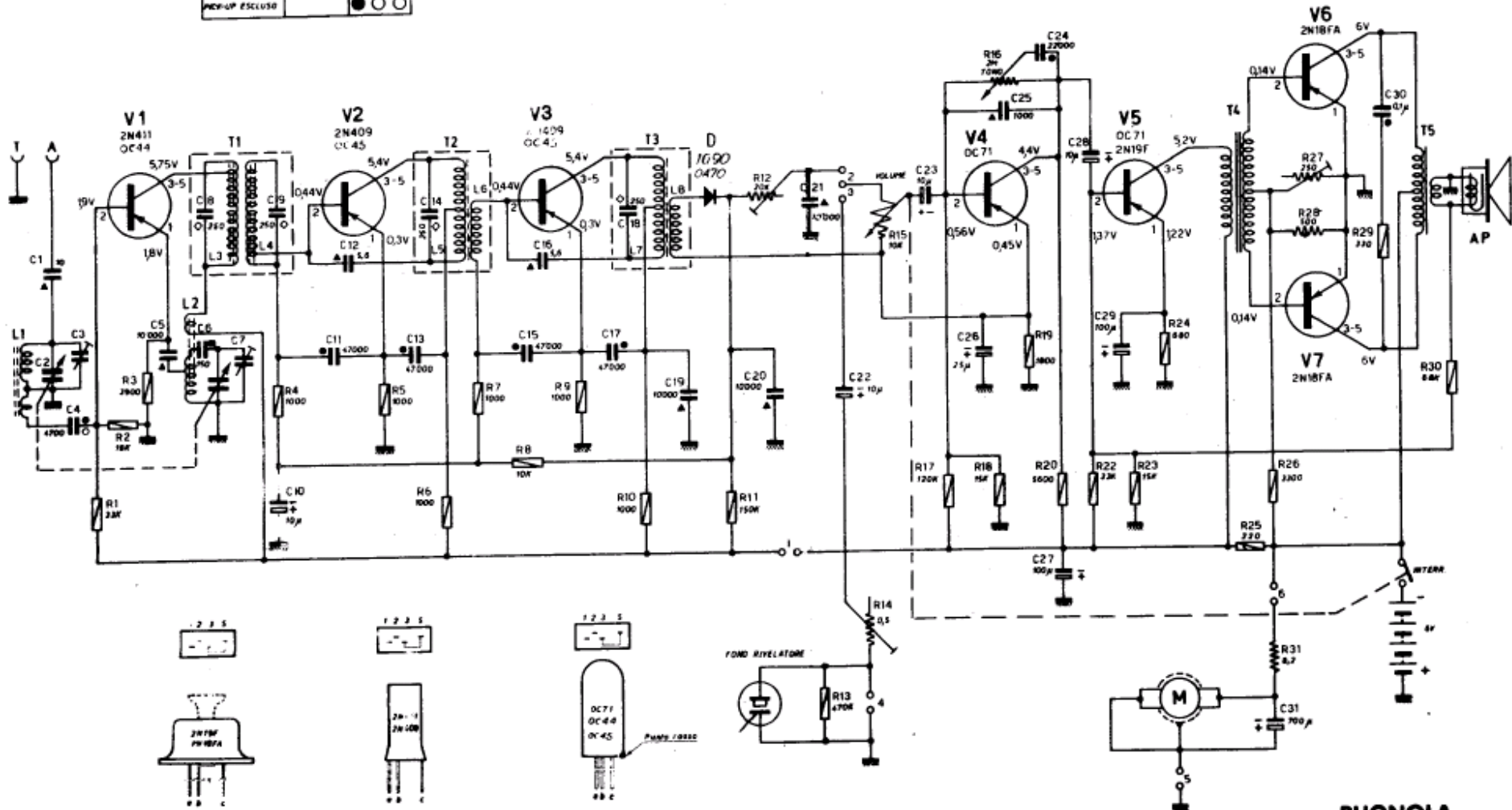


● CONTATTO CHIUSO  
○ CONTATTO APERTO



CONDENSATORI

- CARTA ● 250V
- CARTA ○ 400V
- MC4 ■ 500V
- STYMOFLEX ○ 120V
- CERAMICA ▲ 500V

TENSIONI MISURATE RISPETTO A MASSA CON MULTIMETRO A VALVOLA  
SENZA SEGNALI IN ANTENNA

PHONOLA

T 702